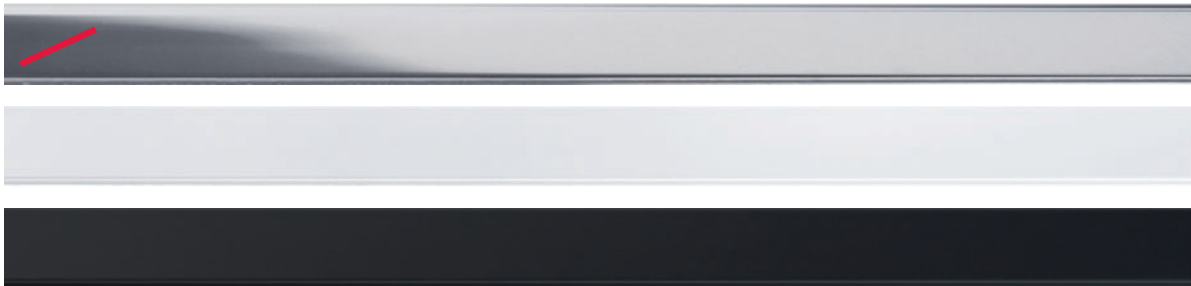


# LightLight® IN



93002  
alumatt



93022  
polished

93032  
white

93042  
black

LightLight® IN Schiene  
LightLight® IN track

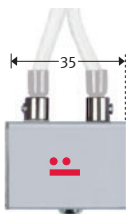


Einbauschiene  
mit Einspeisung  
rechts oder links  
Recessed track  
with power feed  
right or left

93006  
93026  
93036  
93046

5

Befestigungsclip für Teileinbau  
Fastening clip for semi-recessed mounting  
91957



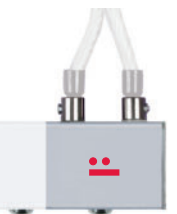
Einspeisung oben,  
rechts oder links  
Power feed, top  
right or left

93614  
93611  
93612  
93613



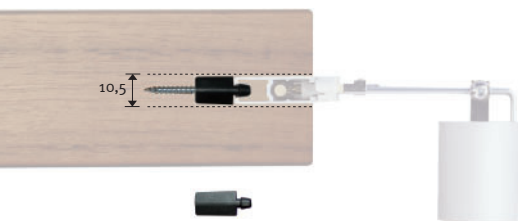
Einspeisung oben,  
mitte  
Power feed, top  
in centre

93619  
93615  
93616  
93617



Einspeisung oben,  
rechts oder links  
Power feed, top  
right or left

93614  
93611  
93612  
93613

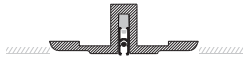


Befestigungsclip  
zum Regaleinbau  
Fastening clip for  
mounting in shelves  
91956

**Soft-Architecture-Profile | Soft Architecture profiles**

Profile zum Gipseinbau für Decke oder Wand, kürzbar, inklusive 5 Befestigungsclips für LightLight® IN Schienen.  
(Bei horizontaler Wandanwendung muss das zusätzliche Ausgleichsband bestellt werden.)

Plasterboard profiles for recessed mounting in walls or ceilings including 5 mounting clips for LightLight® IN track  
(Levelling tape for horizontal wall mounting applications must be ordered separately.)



Deckenbündiges Profil, L=2000, kürzbar, inklusive Befestigungsmaterial  
Profile for flush mounting, L=2000, can be shortened on site, mounting material included



98200

Eckelement 90°  
Corner element 90°



98050

Abschlusselement, L=1000, kürzbar, inklusive Befestigungsmaterial  
End element, L=1000, can be shortened, mounting material included



98020



Aufbauprofil, L=2000, kürzbar, inklusive Befestigungsmaterial  
Profile for semi-recessed mounting, L=2000, mounting material included



98250

Eckelement 90°, Radius 100  
Corner element 90°, radius 100



98060

Abschlusselement, L=1000, kürzbar, inklusive Befestigungsmaterial  
End element, L=1000, mounting material included



98030

**Zubehör | Accessories**

Befestigungsclips zum **Teileinbau** der LightLight® IN Schiene (5 mm der Schiene bleiben sichtbar)  
Verpackungseinheit 5 Stück.  
Fastening clips for **semi-recessed mounting** of the LightLight® IN track (5 mm remain visible).  
Pack of 5.



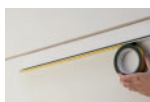
91957

Befestigungsclips zum bündigen Einbau der LightLight® IN Schiene. Verpackungseinheit 5 Stück. **Ergänzungsset.**  
Fastening clips for recessed mounting of LightLight® IN track (flush to ceiling).  
Pack of 5. **Additional set.**



91955

Ausgleichsband für horizontalen Wandeinbau, L=6000  
Levelling tape for recessed mounting in walls, horizontal, L=6000



91958

**Schienen, 12 V 25 A | Tracks, 12 V 25 A**

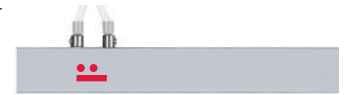
Einbauschiene, L=2000, kürzbar  
Recessed track, L=2000, can be shortened on site



■ 93002  
■ 93022  
■ 93032  
■ 93042

**Einspeisungen | Power feeds**

Einbauschiene, L=2000, kürzbar mit Einspeisung rechts oder links  
inklusive 2 Endkappen  
Pendant track for recessed mounting, L=2000 can be shortened on site, with power feed, right or left, 2 end caps included



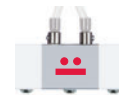
■ 93006  
■ 93026  
■ 93036  
■ 93046

Einspeisung oben, rechts oder links, L=35  
inklusive 2 Endkappen  
Power feed, top right or left, L=35  
2 end caps included



■ 93614  
■ 93611  
■ 93612  
■ 93613

Einspeisung oben, mitte, L=35  
inklusive 2 Endkappen  
Power feed, top in centre, L=35  
2 end caps included



■ 93619  
■ 93615  
■ 93616  
■ 93617

**Zubehör | Accessories**

Anschlusslitze, silbertransparent  
inklusive 4 Aderendhülsen  
Stranded cable transparent silver, 4 core end sleeves included

2 x 6 mm<sup>2</sup>

90500

2 x 2,5 mm<sup>2</sup>

90525

**Regaleinbau | Mounting in shelves**

Befestigungsclips zum **Regaleinbau** der LightLight® IN Schiene. Verpackungseinheit 2 Stück.  
Fräsanleitung Buschfeld beachten.  
Fastening clips for LightLight® IN track for **mounting in shelves**. Pack of two.  
Please follow milling instructions.



91956

# LightLight® IN

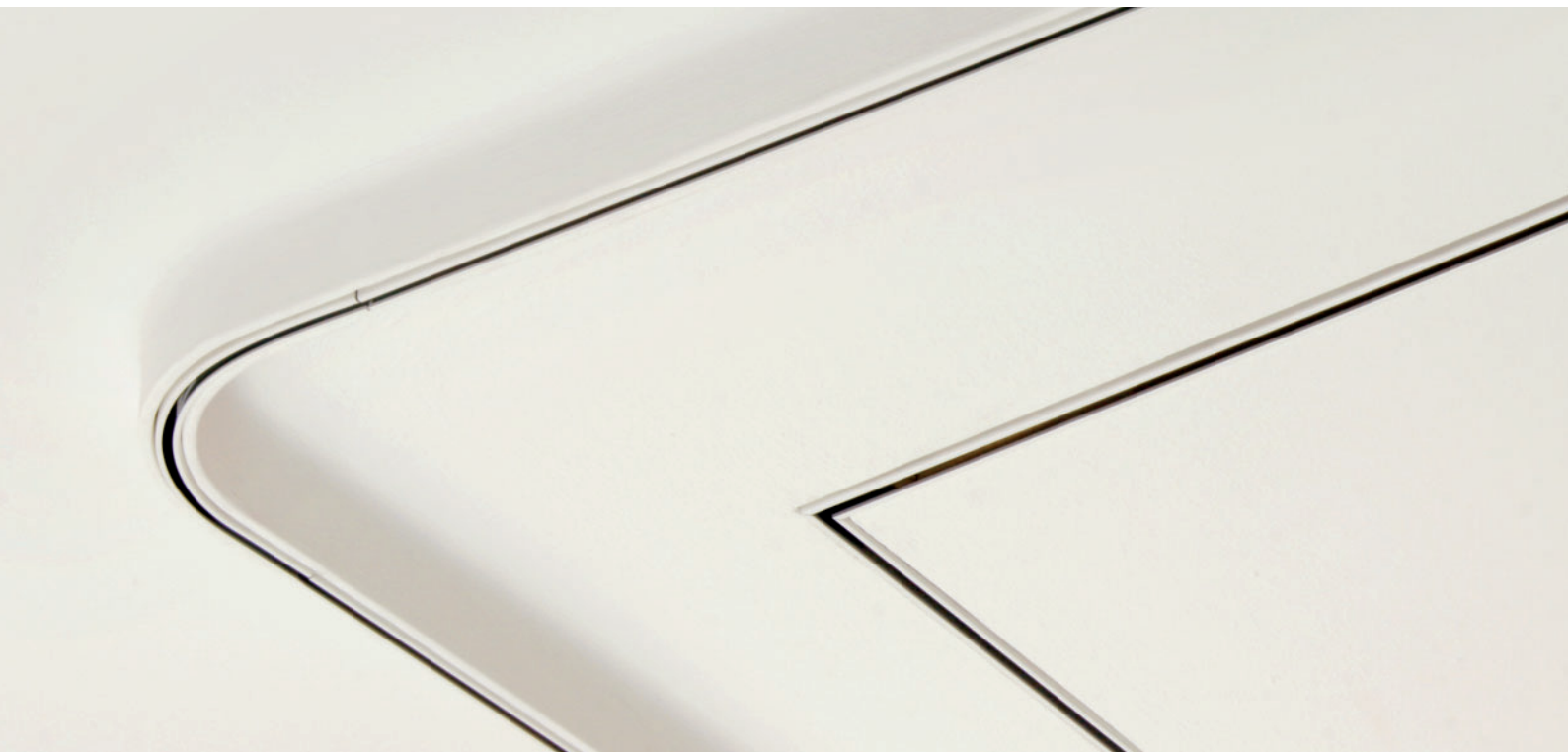


Linearverbinder, leitend  
Linear connector, conductive  
93111



Linearverbinder, isolierend  
Linear connector, insulating

- 91304
- 91304
- 91305
- 91307



Eckelement 90° für Aufbauprofil  
Corner element 90° for semi-recessed profile  
98060



Eckelement 90° für deckenbündiges Profil  
Corner element 90° for flush to ceiling mounted profile  
98050



Eckverbinder 90°, leitend  
Angle connector 90°, conductive

- 93119 a
- 93119 p
- 93119 w
- 93119 b



Eckverbinder 90°, nicht leitend  
Angle connector 90°, non-conductive

- 93121 a
- 93121 p
- 93121 w
- 93121 b



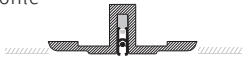
Eckverbinder 90°, leitend  
Angle connector 90°, conductive

- 93113

Bei nicht leitenden Ecken  
wird kein Verbinder benötigt.  
For non-conductive corners  
no connector required.

**Verbindungselemente | Connectors**

Für deckenbündige Einbauprofile  
For flush-mounted profiles



Linearverbinder,  
leitend, L=0  
Linear connector,  
conductive, L=0



93111

Linearverbinder,  
isolierend, L=1  
Linear connector,  
insulating, L=1



- 91304
- 91304
- 91305
- 91307

Eckverbinder 90°,  
leitend, L=0  
Gehrungsschnitt bauseits  
Angle connector 90°,  
conductive, L=0  
mitre cut on site required

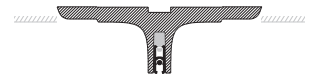


93113

Bei nicht leitenden Ecken  
wird kein Verbinder benötigt.  
For non-conductive corners  
is no connector required.

**Verbindungselemente | Connectors**

Für Aufbauprofile  
For surface-mounted profiles



Linearverbinder,  
leitend, L=0  
Linear connector,  
conductive, L=0



93111

Linearverbinder,  
isolierend, L=1  
Linear connector,  
insulating, L=1



- 91304
- 91304
- 91305
- 91307

Eckverbinder 90°,  
leitend,  
inklusive Schienenabschnitt, Radius 100  
Angle connector 90°,  
conductive  
including track section, radius 100



- 93119 a
- 93119 p
- 93119 w
- 93119 b

Eckverbinder 90°,  
nicht leitend,  
inklusive Schienenabschnitt, Radius 100  
Angle connector 90°  
non-conductive  
including track section, radius 100



- 93121 a
- 93121 p
- 93121 w
- 93121 b